

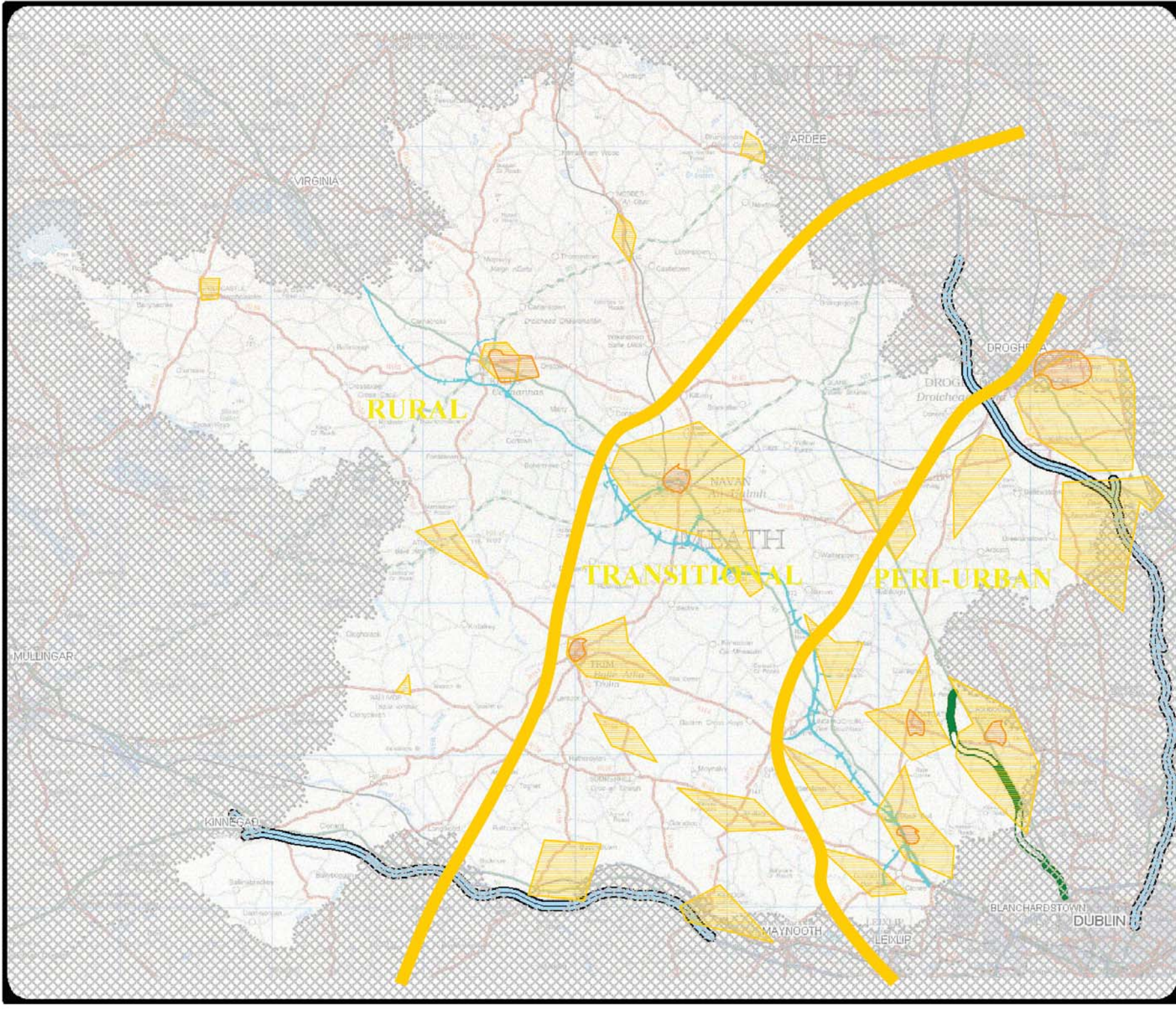
Title: Map 4.1
Scenario 1:
Current Situation

Information shown on this map is for information purposes only. It is for use only on any item should be checked with Meath County Council. This map has been produced by Meath County Council with the assistance of Local Authority and Ordnance Survey base data.

© Ordnance Survey, Ireland & Government of Ireland, Meath CSRS 2002. NOT TO BE REPRODUCED, REPRODUCED OR TRANSMITTED IN ANY FORM OR BY ANY MEANS, WITHOUT THE EXPRESS WRITTEN PERMISSION OF THE MAP INFORMATION SERVICE COMPANY. Scales on this map are all at 1:25,000 of latest Scale.

Contact:
 Planning Department
 Meath County Council
 County Hall,
 Railway Gate,
 Enniscorthy, Co. Meath.

Tel: 046 8000000
 Fax: 046 8000006
 e-mail: planning@meathcoco.ie

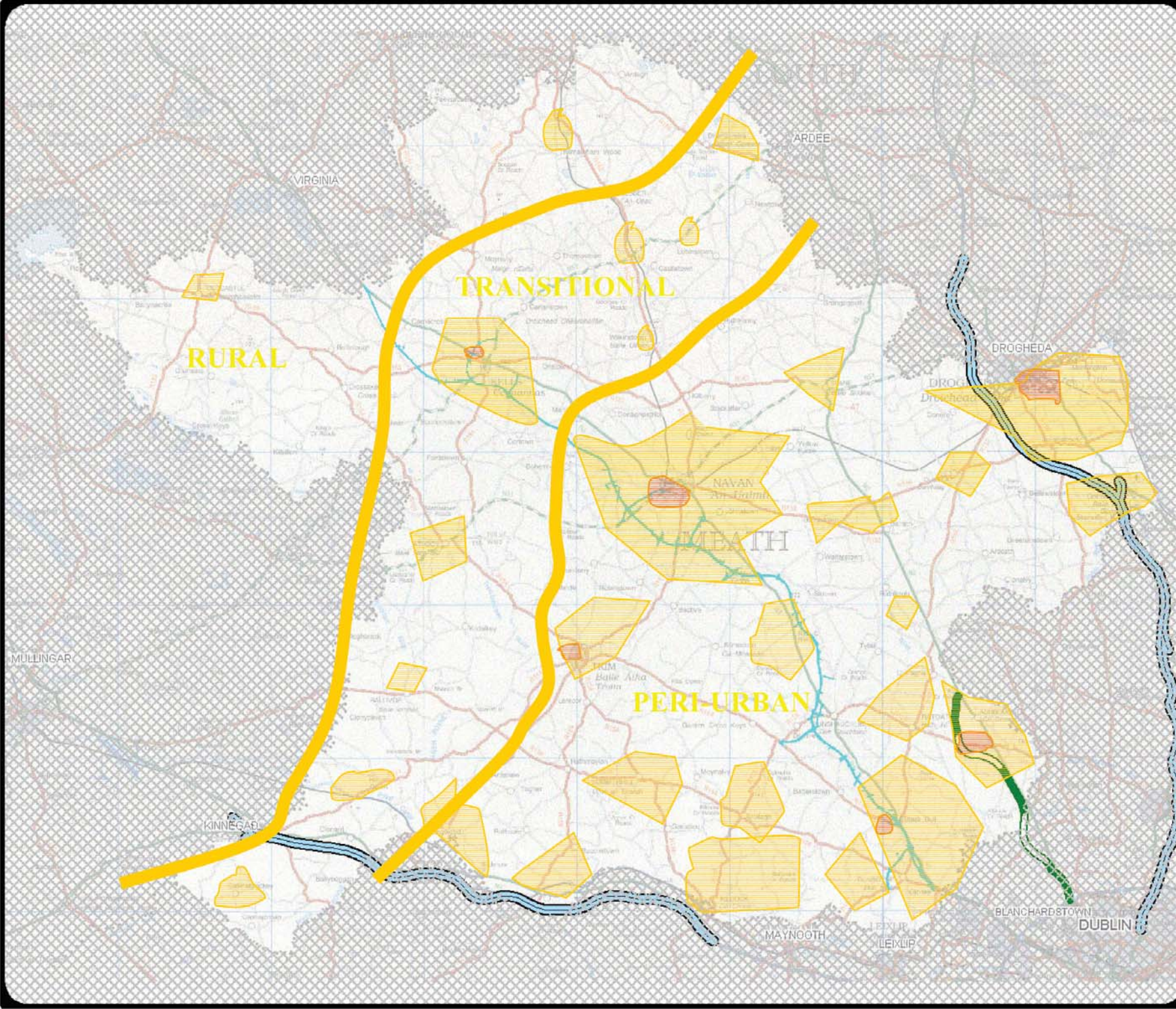


Title: Map 4.2

**Scenario 2:
Unplanned Trend
Growth**

NOT TO BE TAKEN ON OR FOR INFORMATION PURPOSES ONLY. Further details on any item should be checked with Meath County Council. This map has been produced by Meath County Council at its available Local Authority and Ordnance Survey base data.

© Ordnance Survey, Ireland & Government of Ireland, Meath CO. 2007
 NOTE - UNAUTHORIZED REPRODUCTION OF THIS MAP IN ANY STATE IS PROHIBITED.
 Dates on this map are all based on 2007 data.



Title: Map 4.3

Scenario 3A: Sprawl

Note: Details shown on this map are for information purposes only. Further details on any plans should be obtained from Meath County Council. This map has been produced by Meath County Council at its available Local Authority and Ordnance Survey base data.

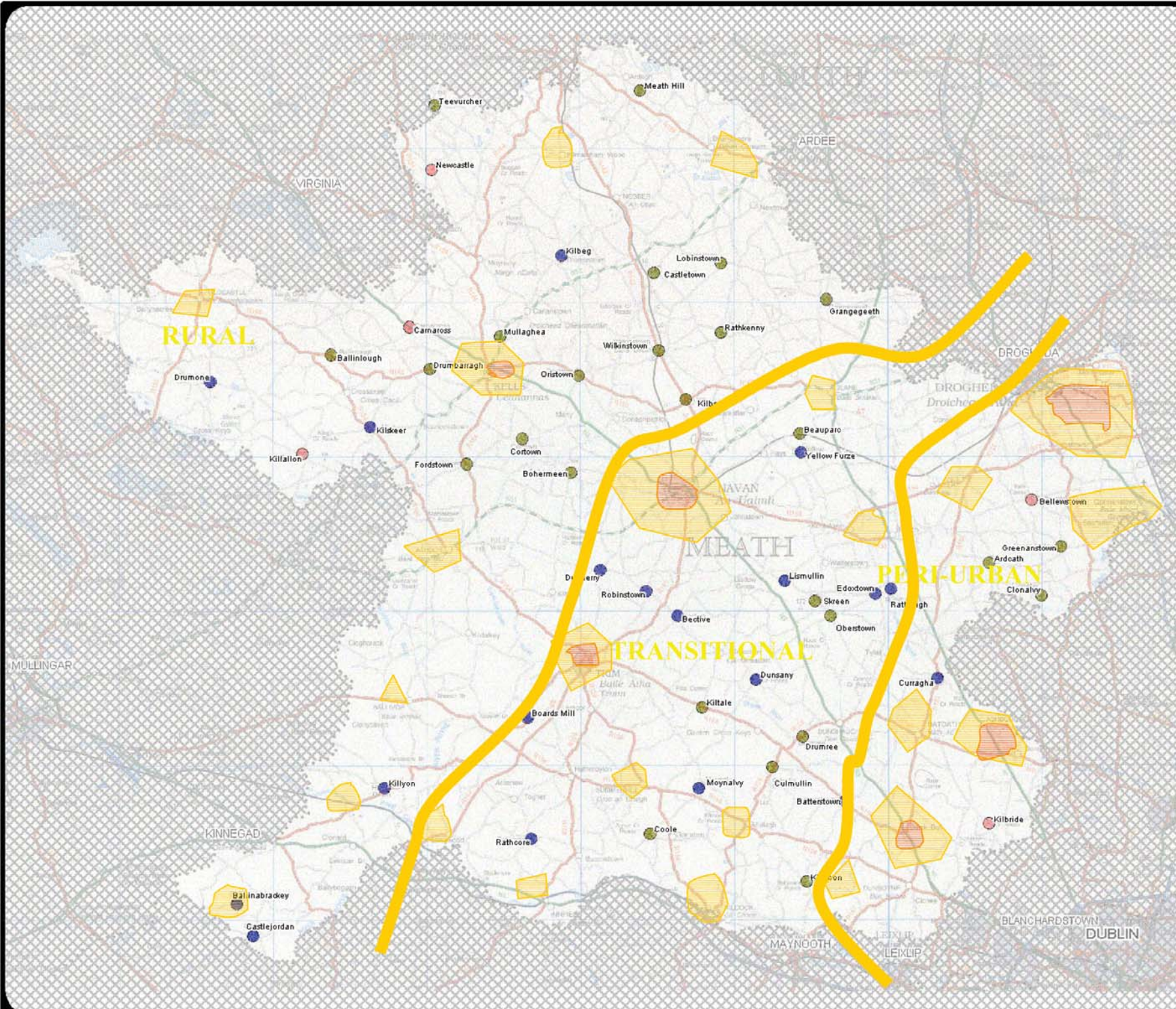
© Ordnance Survey Ireland & Government of Ireland, Meath CC&MA 2007. NOTE: THIS MAP IS THE PROPERTY OF THE MAP INFORMATION STATE COPY RIGHT. Scale on this map are at least 1:125,000 Scale.

Contact: Planning Department, Meath County Council, Railway Street, Ruan, Co. Meath. Tel: (0445) 90607030 Fax: (0445) 90607076 Email: planning@meath-coco.ie



KEY

- Wet Graigs
- Dry Graigs
- Proposed Graigs



Title: Map 4.4

Scenario 3B:
Planned Growth

Note: Details shown on this map are for information purposes only. Further details on any projects should be checked with Meath County Council. This map has been produced by Meath County Council with available Local Authority and Ordnance Survey base data.

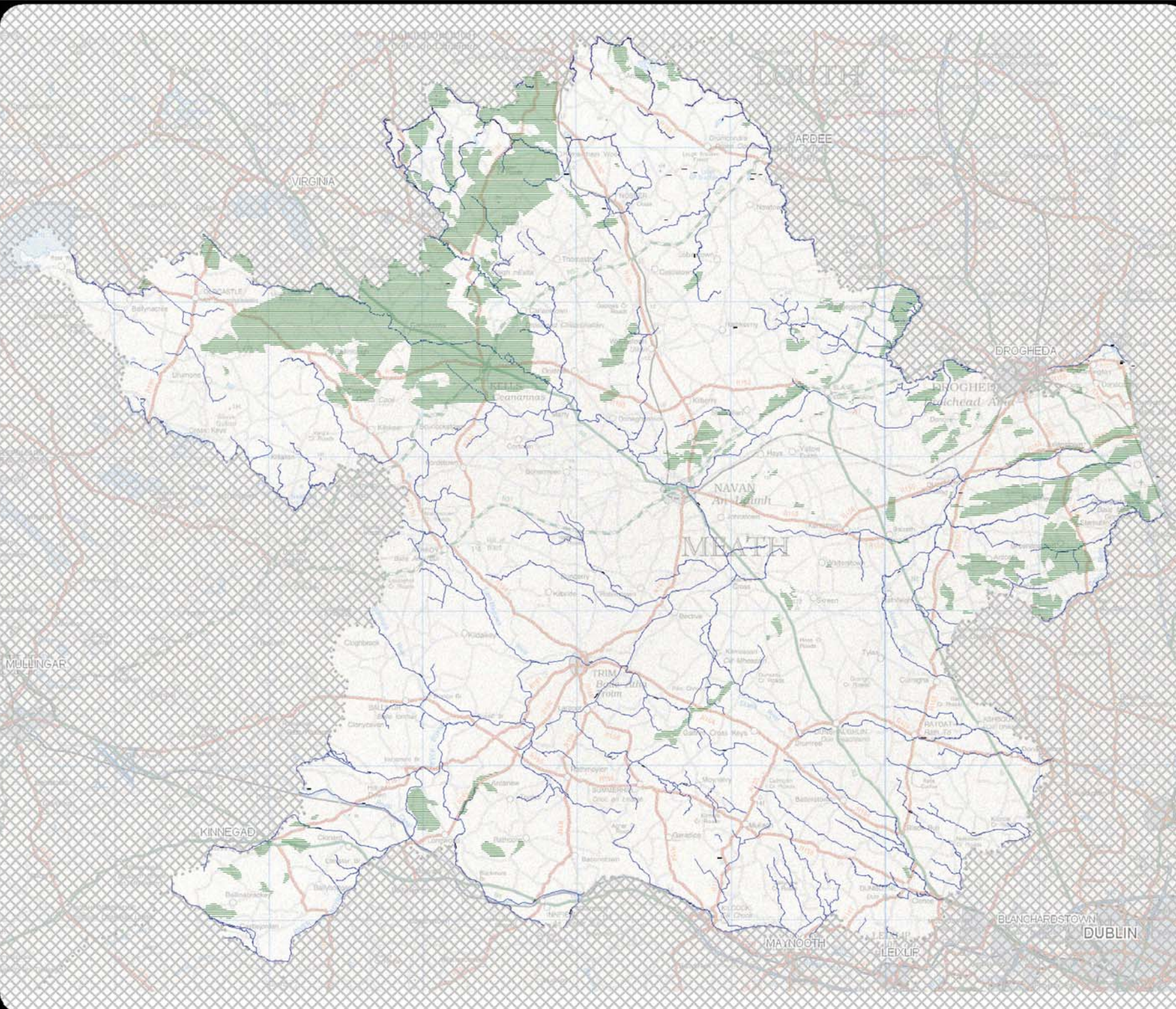
© Ordnance Survey Ireland & Government of Ireland, Meath COMA 58322
NOTE: UNAUTHORISED REPRODUCTION OF THIS MAP IN BREACH OF STATE COPYRIGHT.
Scales on this map are all at 1:10,000 of a 1:50,000 scale.

Contact:
Planning Department
Meath County Council
County Hall,
Rathfriland,
Meath, Co. Meath

Tel: (046) 8562100
Fax: (046) 8562176
e-mail: planning@meathoco.ie



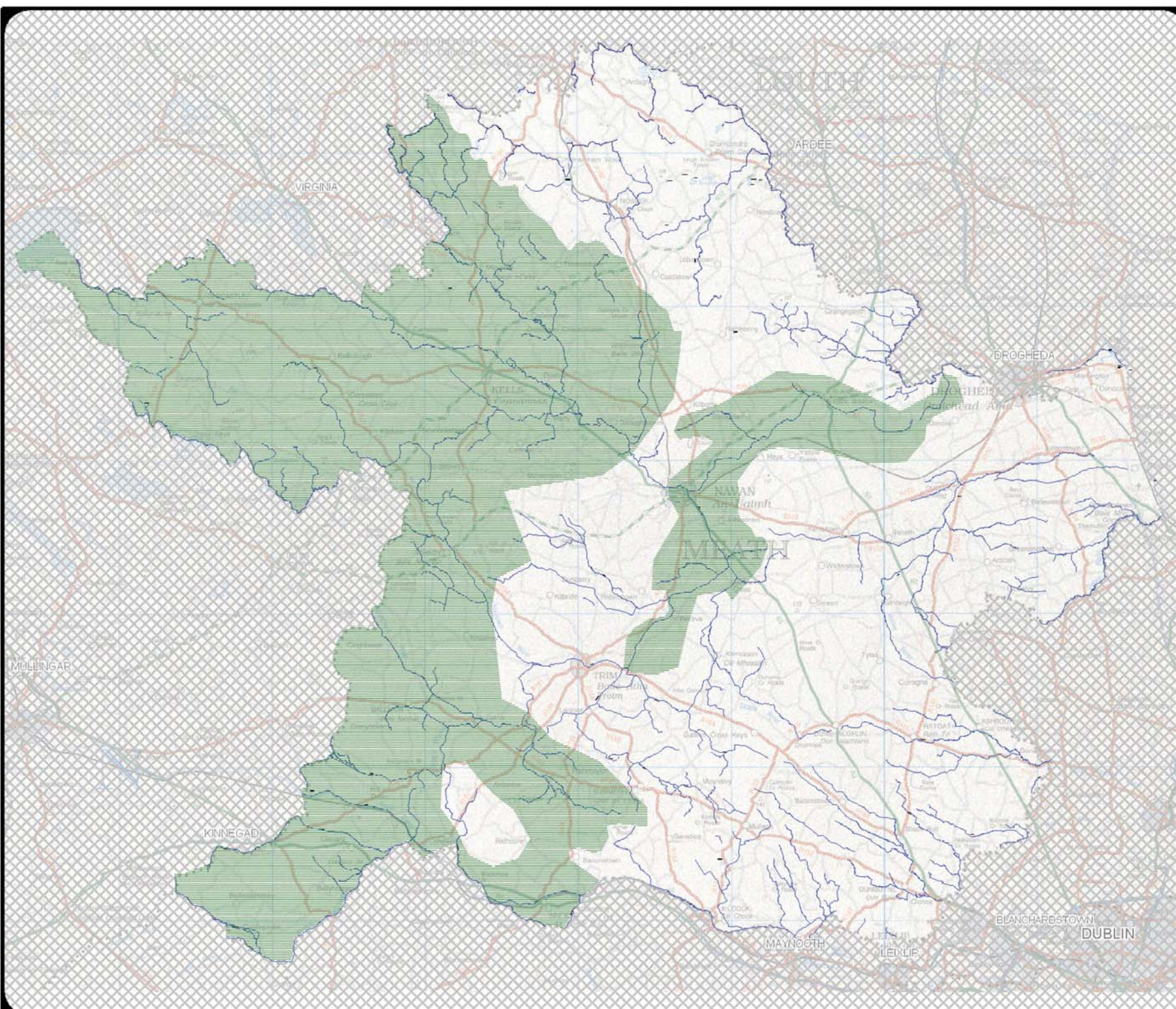
MapInfo File:
C:\data\meath\meath_cdev\meath_cdev.mxd
Printed By: S.J. (10/08)



Title: Map 6.1
Natural Resources
[Reference: Geological Survey of Ireland (2004) Rock Aggregate Potential & Rock Granular Potential]

Note: Details shown on this map are for information purposes only. Further details on any item should be clarified with Meath County Council. This map has been produced by Meath County Council with available Local Authority and Ordnance Survey base data. © Ordnance Survey Ireland & Government of Ireland, Meath CCMA 0002. NOTE - UNAUTHORISED REPRODUCTION OF THIS MAP INFRINGES STATE COPYRIGHT.

Contact:
Planning Department
Meath County Council
County Hall,
Railway Street
Navan, Co. Meath
Tel: (046) 90907090
Fax: (046) 90907076
e-mail: planning@meathco.ie



Title: Map 6.2
Unpolluted River Catchments
[Reference: EPA (2005) Water Quality in Ireland 2001-2003]

Note: Details shown on this map are for information purposes only. Further details on any item should be clarified with Meath County Council. This map has been produced by Meath County Council with available Local Authority and Ordnance Survey base data. © Ordnance Survey Ireland & Government of Ireland, Meath C.CMA-6802
NOTE - UNAUTHORISED REPRODUCTION OF THIS MAP INFRINGES STATE COPYRIGHT.

Contact:
Planning Department
Meath County Council
County Hall,
Railway Street
Navan, Co. Meath
Tel: (046) 90607050
Fax: (046) 90607016
e-mail: planning@meathcoco.ie